



QUICK TIME

MADE IN ITALY,
DELIVERED IN 30 DAYS

NATUZZI
ITALIA

www.natuzzi.com

NATUZZI
ITALIA

interview to Pasquale Natuzzi



BESIDES FOUNDING THIS COMPANY, YOU ALSO CREATED THE PHILOSOPHY THAT INSPIRES NATUZZI LIVING ROOMS. COULD YOU EXPLAIN IT TO US?

"SPACE EVOLVES, JUST AS WE DO. EVEN MORE SO, WHEN THE SPACE INVOLVED IS OUR HOME. OUR HOMES CHANGE AND CONTINUALLY ADAPT TO NEW TASTES, PERSPECTIVES, MOODS AND LIFESTYLES. WE BELIEVE IT IS ESSENTIAL TO VIEW THE HOME AS A PLACE WHERE PEOPLE RETURN TO AND FIND THEMSELVES, THEIR INTIMACY, THEIR LOVED ONES AND THEIR VALUES. AND IT IS ON VALUES THAT WE BASE OUR SOLUTIONS: BEAUTY, LASTING QUALITY AND HARMONY WITH THE OBJECTS SURROUNDING US".

HOW IS THIS IDEA OF HARMONY REFLECTED IN YOUR CREATIONS?

"OUR CREATIONS ARE DESIGNED TO REFLECT AN IDEA OF SPACE THAT TRANSCENDS THE SINGLE FURNITURE ELEMENT. EVERYDAY, AT THE NATUZZI STYLE CENTRE, WE CREATE FURNISHING SOLUTIONS THAT ARE PERFECTLY COORDINATED: THE MATCHING SOLUTIONS IN TERMS OF FORMS, MATERIALS AND COLORS ARE STUDIED TO YIELD ENVIRONMENTS THAT ARE DISTINGUISHED BY THE HARMONY THEY RADIATE".

NATUZZI IS AN ITALIAN COMPANY WITH A 50-YEAR HISTORY. WHAT ARE THE REASONS BEHIND YOUR SUCCESS?

"ALTHOUGH OUR GROUP DATES BACK TO SOME 50 YEARS AGO, IT HAS NEVER CEASED TO REGARD ITSELF AS YOUNG. WE ALWAYS SET NEW TARGETS FOR OURSELVES, IN THE TRUE SPIRIT OF OUR HISTORY AND IDENTITY. WE ARE WORLD LEADERS IN THE FURNITURE SECTOR, YET OUR PRODUCTS ARE ITALIAN THROUGHOUT - FROM THE INITIAL DRAWINGS TO THE FINAL STITCHING PHASE. THE STYLE CENTRE IS ITALIAN, SO TOO ARE THE PRODUCTION PLANTS AND THE TANNERY. WE ARE SCATTERED THROUGHOUT THE WORLD, YET WE DO NOT FORGET WHO WE ARE AND WHERE WE COME FROM"

NATUZZI INTRODUCED THE LEATHER SOFA TO MANY AMERICAN HOMES. WHAT DO YOU PROPOSE NOWADAYS?

"NOWADAYS, NATUZZI ITALY PROVIDES COMPLETE SOLUTIONS FOR LIVING AND DINING AREAS AND THE POSSIBILITY OF PERSONALIZING YOUR HOME WITH A BEAUTIFUL MIX OF SOFAS, ARMCHAIRS, ACCESSORIES, TABLES AND DINING CHAIRS. MOREOVER, EXCLUSIVELY FOR THE US MARKET, WE HAVE INTRODUCED THE QUICKTIME SERVICE, NAMELY A SELECTION OF NATUZZI ITALY SOFAS AND FURNITURE ELEMENTS THAT ARE DELIVERED TO HOMES IN LESS THAN 4 WEEKS".

WHY SHOULD A PERSON CHOOSE A NATUZZI SOFA OR FURNITURE ELEMENT?

"BECAUSE OUR PRODUCTS ARE ITALIAN, BEAUTIFUL AND PROFESSIONALLY-MADE. THIS IS THE PACT THAT HAS ALWAYS DEFINED THE RELATIONSHIP WITH MY CUSTOMERS".

QUICK TIME

A SELECTION OF YOUR FAVORITE MODELS DELIVERED IN XXXXXXXXX:
DESIGNED TO FURNISH A COMPLETE LIVING SPACE IN THE SHORTEST TIME –
THIS IS THE QUICKTIME PROGRAM BY NATUZZI.

OUR MODELS ARE ENTIRELY DESIGNED & MADE IN ITALY, CREATED BY OUR DESIGNERS
IN OUR STYLE CENTER AND MANUFACTURED BY EXPERT CRAFTSMEN.

PRODUCTION TAKES PLACE AT THE ITALIAN FACILITIES OF THE GROUP IN FULL COMPLIANCE
WITH ERGONOMIC PRINCIPLES TO ENSURE UNIQUE COMFORT. STRICT QUALITY CONTROL
TESTS ARE PERFORMED ON ALL OF OUR MATERIALS TO ENSURE SAFETY AND DURABILITY.

NATUZZI AND 50 YEARS OF ITALIAN DESIGN, NOW AVAILABLE FOR IMMEDIATE DELIVERY.

COVER PAGE: ÉTOILE IS BEAUTIFULLY DESIGNED Mode that EVOKES IMAGES OF A MODERN, SOPHISTICATED SILHOUETTE.

Available in XXXX Leather XXXX WITH GLOSSY CHROME METAL FOOT.

Height: XXCM/XX" / Seat Height: XXCM/XX" / Width: XXCM/XX" / Depth: XXCM/XX"

MODERNITÀ

LIVELINESS, COLOR AND INNOVATIVE FORMS
GIVE NEW MEANING TO EVERYDAY SPACES,
THANKS TO THE FULL ENERGY
OF NEW IDEAS.



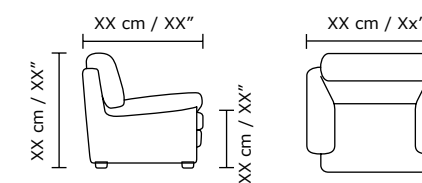
Description Derro dolor aut doleculpa dolor rum et auda
eped maxim excedep quis essimintus undipsus. Imodi rem
iunt ma de acest que ipist, sinullorere cone eatibus et ad
maiore net.

Available in

XXX LEATHER WITH
CONTRAST LIGHT TAUPE PIPING
COVER XXXX-XXXX
WITH XXXXXXXX FEET



Schematics





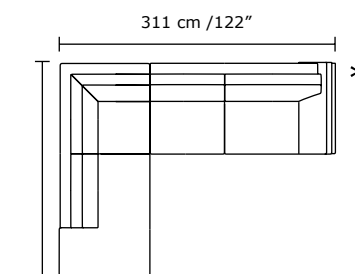
CHARACTERIZED BY ITS UNDERSTATED DESIGN, IT IS A CHIC EXPRESSION OF CONTEMPORARY STYLE. ITS ARCHITECTURAL FEET IN SATIN-FINISHED NICKEL AND THE FINELY WORKED SEAT AND BACK CUSHIONS REVEALS NATUZZI'S CONSTANT ATTENTION TO DETAILS. ITS OPTIONAL HEADREST INCREASES THE SEATING HEIGHT FOR PERSONALIZED COMFORT.

Available in

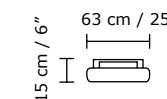
PAPER WHITE LEATHER
PHOENIX 15GZ
WITH NICKEL METAL FEET



Schematics



* Mirror configuration also





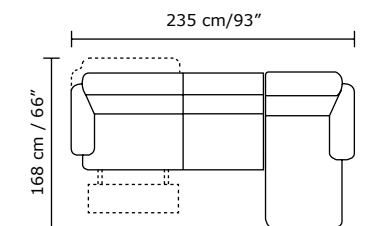
A MINIMAL BUT EXTREMELY ELEGANT LINE: THE ARMREST HAS TRIMMING WHICH OUTLINES THE INNER EDGE. THE DOUBLE STITCHING APPLICATIONS ENHANCE THE SEATING CUSHIONS, THE BACKRESTS AND SIDE OF THE FRAMEWORK. THE CHAISE LONGUE AND RELAX FUNCTION, TOGETHER WITH THE ADJUSTABLE HEADREST, MAKE IT EXTREMELY COMFORTABLE.

Available in

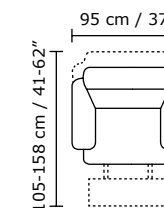
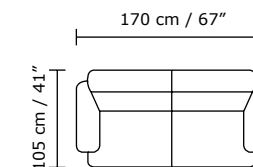
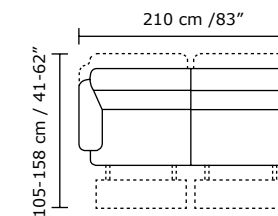
WHITE LEATHER
LE MANS 15CI
WITH WALNUT FEET



Schematics



* Mirror configuration also available





samuel

C-SHAPED STRUCTURE WITH NATURAL FLAMED CANALETTO WALNUT AND LOWER SECTION IN GLOSSY MOKA BROWN OR CREAM STAINED YELLOW PINE VENEER AND LOWER SECTION IN GLOSSY CREAM LACQUERED. SAMUEL IS EQUIPPED WITH A LOW-TECH MECHANISM THAT ENABLES THE LOWER SECTION TO SWIVEL AND EXTEND. THE TABLE IS FITTED WITH ANTI-SCRATCH TEFLON FEET.

CENTRAL TABLE
105CM X 70CM X H 34CM / 41" X 28" X H 13"



cabaret

SIMPLE AND CLEAN DESIGN, THE CHARACTER OF THE TABLE IS CONFERRED BY THE RICHNESS OF MATERIALS USED. BROWN GLASS BACK LACQUERED TOP AND GLOSSY CHROME BASE.

CENTRAL TABLE
L 140 X 80 H 34 CM / 55" X 31" H13"



marta

COFFEE TABLE OF A SIMPLE AND CLEAN DESIGN, COATED IN VENEER WITH A FOLDING TECHNOLOGY. Available in NATURAL FLAMED CANALETTO WALNUT OR IN WENGE STAINED STREAKED OAK. THE TABLE COMES IN THE SQUARE OR RECTANGULAR VERSION. THE BEAUTY AND FUNCTIONALITY OF MARTA CAN BE ENHANCED BY ADDING A GLOSSY CREAM LACQUERED BRIDGE AND SOLID WOOD TRAY. THE TABLE IS FITTED WITH ANTI-SCRATCH TEFLON FEET.

CENTRAL TABLE
140CM X 80CM X H 25CM / 55" X 31" X H 10"
CENTRAL TABLE
80CM X 80CM X H 25CM / 31" X 31" X H 10"
BRIDGE TABLE
90CM X 40CM X H 35CM / 35" X 16" X H 14"



wonder

COFFEE TABLE WITH A TEMPERED BRONZE GLASS AND A SATIN NICKEL BASE OF AN ICONIC SHAPE. AVAILABLE AS A CENTRAL AND SIDE TABLE IN TWO DIFFERENT HEIGHTS.

CENTRAL TABLE
D 105CM X H 35CM / D 41" X H 14"
ACCENT
D 50CM X H 53CM / D 20" X H 21"
D 50CM X H 34 / D 20" X H 13"



nautilus

A TABLE OF MODERN AND LINEAR DESIGN. Available in GLOSSY CREAM LACQUER, SQUARED AND RECTANGULAR SHAPE. NICKEL METAL FEET. AVAILABLE BRIDGE AS ADDITIONAL ACCENT TO THIS TABLE

CENTRAL TABLE
160CM X 88CM X H 20CM / 63" X 35" X H 8"
88CM X 88CM X H 20CM / 35" X 35" X H 8"



drop

AN ORGANIC AND SENSUAL SHAPE FOR AN EXCLUSIVE OBJECT OF IMPORTANT DIMENSIONS, AN ORDER TO REACH STRENGTH AND ELEGANCE FURNISHING THE LIVING ROOM. BRONZE MIRROR GLASS TOP AND STEEL BASE.

CENTRAL TABLE
180 X 86 X H 26CM / 71" X 34" X H 10"

lamps & rugs

QUICKTIME

gordon

LAMP WHOSE DESIGN AND FINISH RECALL THE ORIENTAL WORLD. UPHOLSTERED WITH A BLACK AND WHITE TECHNICAL FABRIC. BLACK GLOSSY CHROME BASE. AVAILABLE IN TWO DIFFERENT HEIGHTS, IDEALLY TO BE SHOWN TOGETHER.

STAND LAMP
D 26CM X H 133CM / D 10" X H 52"
D 26CM X H 103CM / D 10" X H 41"



wisdom

ARCH STAND LAMP WITH NICKEL STRUCTURE AND CONICAL WHITE IVORY BENDED FABRIC LAMP SHADE.

STAND LAMP
(CONICAL LAMP SHADE)
D 55CM X H 200CM / D 22" X H 79"

zen

LAMP OF SIMPLE AND ESSENTIAL DESIGN INSPIRED BY THE OLD CHINESE LANTERNS. OPAL HAND BLOWN GLASS LAMP SHADE AND BLACK CHROME GALVANIZED FRAME. Available in TWO DIFFERENT SIZES TO MATCH TOGETHER.

D 38CM X H 172CM / D 15" X H 68"
D 38CM X H 132CM / D 15" X H 52"



betsi

TUFTED RUG MADE OF THE PRECIOUS NEW ZEALAND WOOL AND POLYESTER. ANTISTATIC AND DUST REPELLENT. THE FEATURE OF THE LONG HAIR TOGETHER WITH THE FINE MATERIALS CONFER TO THE RUG EXTREME SOFTNESS. CERTIFIED BY TÜV/TR. AVAILABLE FINISHING IRON AND BEIGE.

270CM X 190CM • 106" X 75"



armstrong

THE INTERESTING RESULT OF A COMBINATION OF THE CLASSICAL SHAPE OF THE LAMP SHADE TOGETHER WITH THE POP STYLE OF THE FRAME, CONFER ARMSTRONG LAMP TOGETHER WITH RICHNESS OF MATERIALS DEFINITELY HIGH VALUE. AVAILABLE WITH WHITE SHANTUNG SILK LAMP SHADE AND GLOSSY CREAM LACQUERED FRAME.

STAND LAMP
D 54CM X H 175CM / D 21" X H 69"



argo

SHORT HAIR TUFTED RUG MADE OF NEW ZEALAND WOOL AND POLYESTER. ANTISTATIC AND DUST REPELLENT. CHARACTERIZED BY MIX OF DIFFERENT SHADE FIBRES IN ORDER TO OBTAIN BRILLIANT AND DEEP COLORS. THE STANDARDS OF ENVIRONMENT HEALTH AND PRODUCTION CONFORMITY ARE CERTIFIED BY THE GERMAN TÜV/TR INSTITUTE. AVAILABLE FINISHING PLATINUM AND MINK.

270CM X 190CM • 106" X 75"



novecento

novecento

LAMP WHOSE DESIGN AND FINISH RECALL
THE ORIENTAL WORLD. UPHOLSTERED WITH
A BLACK AND WHITE TECHNICAL FABRIC.
BLACK GLOSSY CHROME BASE. AVAILABLE
IN TWO DIFFERENT HEIGHTS, IDEALLY
TO BE SHOWN TOGETHER.

STAND LAMP
D 26CM X H 133CM / D 10" X H 52"
D 26CM X H 103CM / D 10" X H 41"

TWO WEEKS DELIVERY IS INTENDED FROM THE NATUZZI WAREHOUSE TO RETAILERS
AND UPON STOCK AVAILABILITY. ILLUSTRATIONS AND DESCRIPTION OF PRODUCT IN THIS PUBLICATION
ARE MERELY INDICATIVE. NATUZZI SPA RESERVES THE RIGHT TO MAKE ANY CHANGE OF AESTHETIC
AND /OR FUNCTIONAL NATURE IN ALL OF ITS PRODUCTS WITHOUT ANY PRIOR NOTICE AND
WHENEVER SUCH CHANGES ARE DEEMED NECESSARY FOR TRADING OR MANUFACTURING MOTIVATION.
NATUZZI ASSUMES NO RESPONSIBILITY FOR ERRORS OR OMISSIONS IN THIS PUBLICATION.

RELEASE 01 OCTOBER 2010. THIS INFORMATION REFERS TO THE LATEST AVAILABLE AT THE TIME PRINTING.
THE RIGHT TO DISCONTINUE AND MAKE CHANGES IS RESERVED. COLOR-TONE ON PRINT MAY VARY FROM REAL SAMPLE.

ANY PRODUCT SHOWN IN THIS BROCHURE IS ALSO AVAILABLE FOR SPECIAL ORDER.